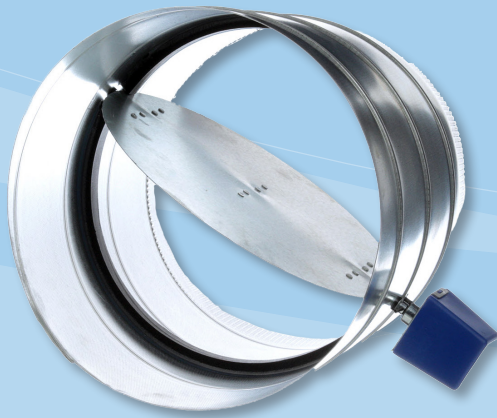


TMD520

Whole-House Motorized Air Damper



PRODUCT DATA SHEET



Overview:

TRION® model TMD520 is a ventilation control system solution for residential applications up to 4,600 square feet. The system introduces outdoor ventilation air into the building envelope through an intake damper that is controlled by the microprocessor based ventilation control interface. The system controls the amount of outdoor ventilation air as required by the Ventilation and Air Quality Standard defined in ASHRAE 62.2, promoting healthier indoor air quality.

Features:

- Adjustable damper position range stops
- Single-blade damper
- Galvanized steel
- Shipped as power open/spring closed
- Can be field-converted to power close/spring open
- Blade closes off tightly against gasket for minimal leakage
- Rated to operate up to 1 in. wc
- Male (crimped) and female (uncrimped) ends to connect to any rigid or flexible round duct
- Actuator bears CE mark

Applications:

- Apartments complexes
- Condominiums
- Single family residences
- Light commercial

Benefits:

- Helps satisfy ventilation codes and standard ASHRAE 62.2
- Controls allow application specific ventilation set points
- Promotes healthier Indoor Air Quality (IAQ)
- Controller optimizes HVAC unit run times
- Exhaust fan control wiring option
- Quick and easy installation and setup

Warranty:

- 5-Year Limited Warranty



UNITS NOT FOR COMMERCIAL USE

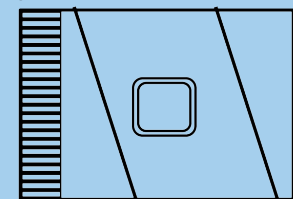
PRODUCT DATA SHEET

TRION® Motorized Damper

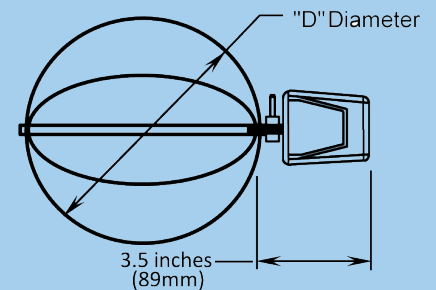
Model	TMD520
Frame	Galvanized steel spiral duct, crimped on downstream side.
Sizes	5 in., 6 in., 8 in., 10 in., 12 in., 14 in., 16 in., 18 in., and 20 in. diameters
Cap Covers	Comes standard in plastic and is available in metal with #6 screws.
Gauges	24 Gauge frame, and 22 Gauge blade. 22 Gauge frame, and 20 Gauge blade.
Motor Electrical Rating	24 VAC, 60 Hz, 6VA
Motor Electrical Connection	4 in. lead wire
Motor Nominal Angular Rotation	90°
Motor Torque	Minimum 60 in.-oz. (423 milli-newton meters) output torque available when motor is energized and device is at the spring return initial start position.
Nominal Motor Timing at 77°F (25°C) Ambient	Energized at rated load: 30 seconds. De-energized (spring return): 10 seconds
Motor Ambient Temperature Rating	40° to 140°F (5° to 60°C)
Leakage	Less than 1% at 1/2 in. wc.
Pressure Drop	Maximum at full open: 0.0329 in. wc at 800 ft/min.
Maximum Static Pressure	1 in. wc for all models except 0.3 in. wc for TMD520.
Motor Shaft Rotation Direction	Clockwise, when energized and viewed from the base or shaft end.
Motor Mounting Means	Multi-poise
Motor Dimensions	See Fig. 2

Dimensions				
	A	B	C	D
in	3.5	2.75	3	*
mm	88.9	69.85	76.2	*

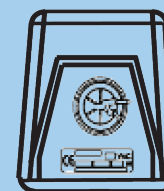
*Diameter varies, see options to the left. The length is equal to the diameter plus 2 in.



$$L = \text{Diameter} + 2 \text{ inches } (.51\text{mm})$$



$$\leftarrow B \rightarrow$$



$$\leftarrow C \rightarrow$$

Threaded Screw

Set Screw on Rear

The specifications given in this publication do not include normal manufacturing tolerances. Therefore, this unit may not exactly match the listed specifications. Also, this product is tested and calibrated under closely controlled conditions, and some minor differences in performance can be expected if those conditions are changed.

Indoor Air Quality Since 1947

ISO 9001:2015 Certified

Industry Memberships:

HARDI



Proudly Designed,
Engineered, and
Manufactured in the USA.*



*Manufactured with domestic and foreign components.

To help serve you better,
please contact us at:

800-884-0002 (tel)

800-458-2379 (fax)

TRION®

101 McNeill Road
Sanford, NC 27330

www.trioniaq.com

customerservice@trioniaq.com

TRION® is a registered trademark of Air System Components, Inc. Air System Components, Inc. is a subsidiary of Johnson Controls Inc. All product specifications reflect available information at the printing of this brochure. TRION® reserves the right to revise or modify products and/or specifications without notice. © 2018 TRION®